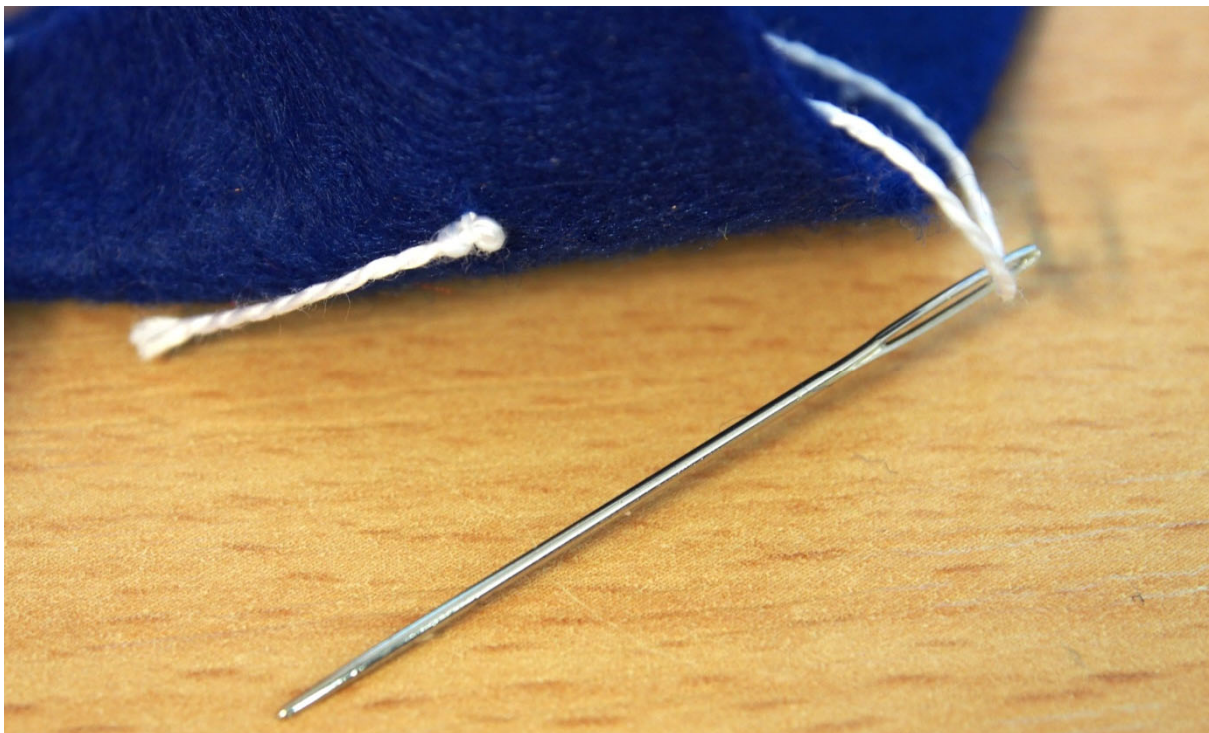


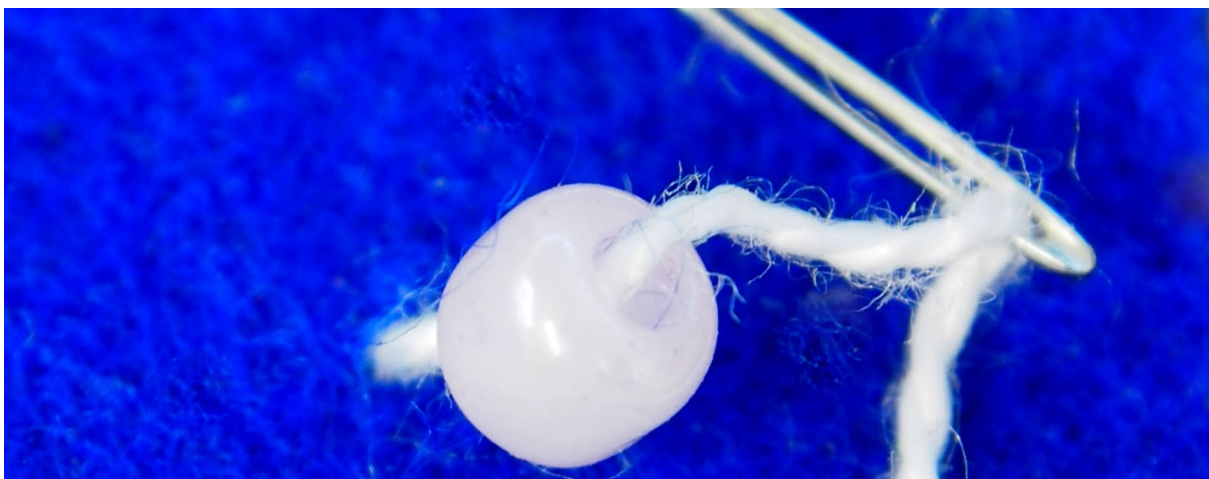
How to Sew a Bead (Eye Decoration)



1. Tie a knot at the end of your thread. Then poke your needle through 1 of your felt layers.

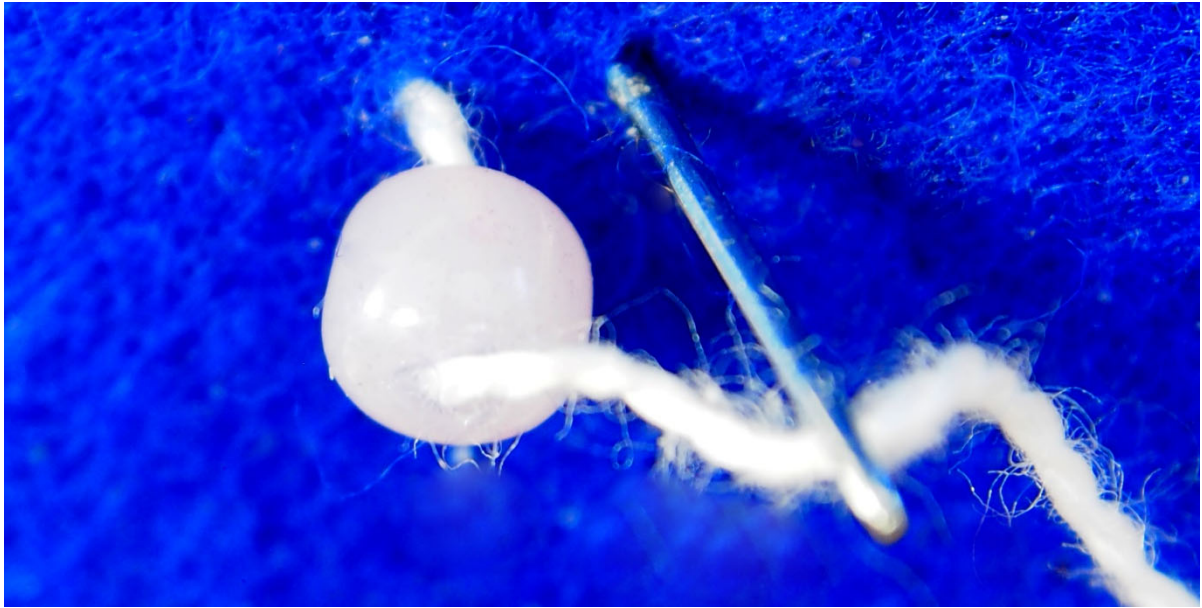


2. Poke your needle and thread through the centre of the bead.



How to Sew a Bead (Eye Decoration)

3. Push your needle and thread back through the felt next to the bead.



4. Tie a knot on the back of the felt to secure the bead and cut off any excess thread.